

BISON 2000A MAINTENANCE GUIDE

Tool Requirements

- Philip screwdriver
- Flathead screwdriver
- 5/32 or T-25 screwdriver or equivalent
- T-15 screwdriver or equivalent

Steps

1. Position the heater as shown in the picture below. Push down on where the red boxes indicate in the picture, pull the inlet and outlet covers (black plastic shells) outwards to remove them.



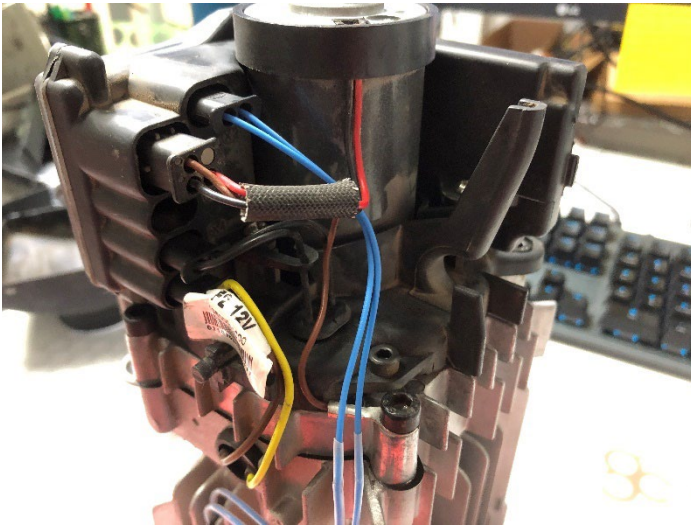
2. Remove the top and bottom covers of the heater.
3. After the removal of all plastic covers, you will be exposed to the heater itself. Position the heater such that the impeller is on the top.
4. Remove the 4 orange grommet from the heat exchanger.



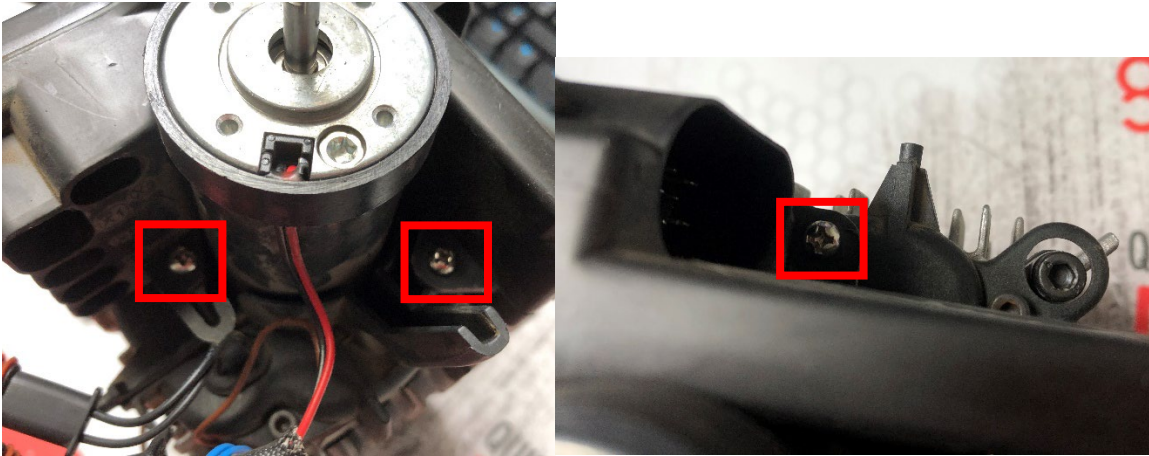
5. Use a flat head screwdriver and lightly pry open the highlighted area in the photo below. Remove the fan impeller.



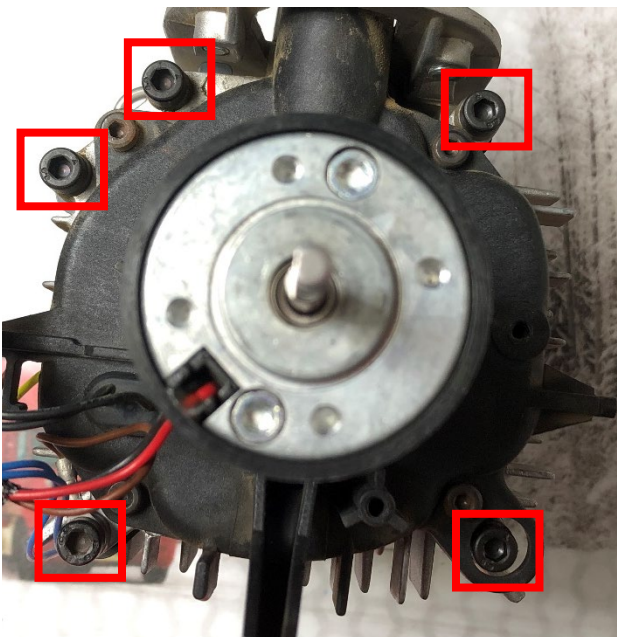
6. Please take a picture of the connections on the ECU. Remove all connectors from the ECU.



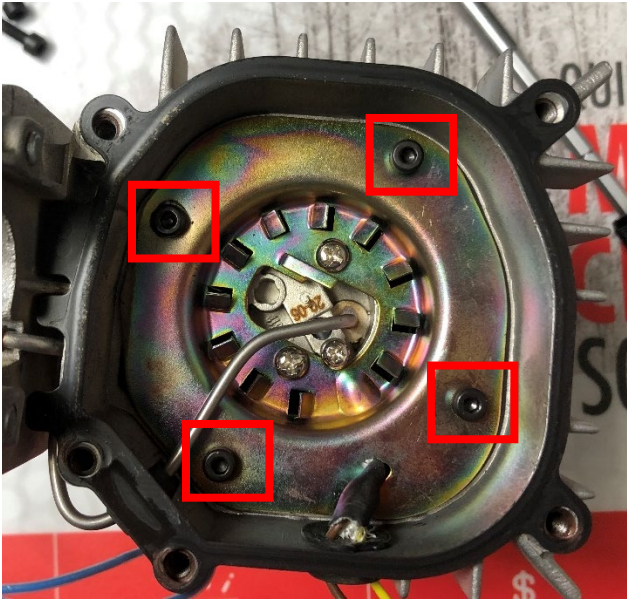
7. Use a Philip screwdriver to remove the 3 screws that is holding the ECU, then remove the ECU from the heater.



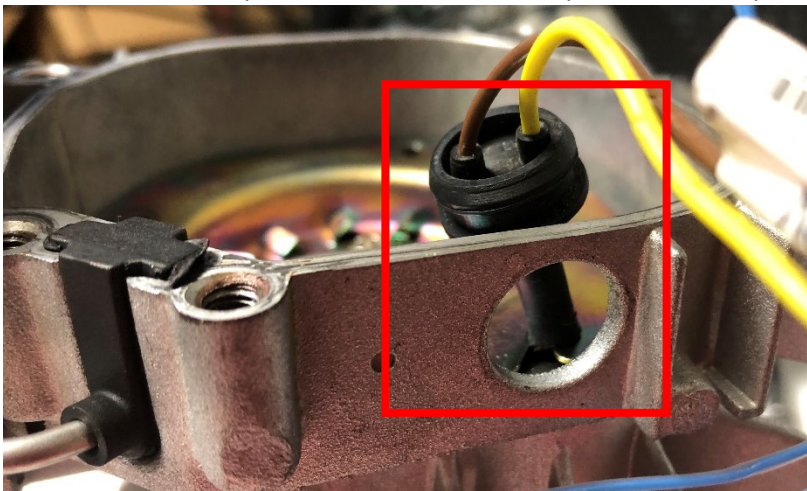
8. Use a 5/32 or T-25 screwdriver bit or equivalent to remove the 5 long screws as shown below. Remove the blower motor from the heater.



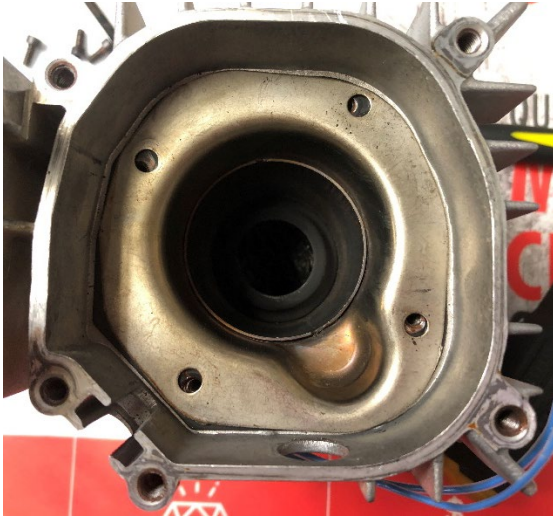
9. Remove the blower gasket. Then use a T-15 screwdriver bit or equivalent to remove the 4 short screws as indicated in the picture below.



10. Before removing the burner from the heater, first push in the rubber grommet and gently feed the glow pin connector towards the inside of the heater.
Should look like the picture below after this step has been completed.



11. Remove the Burner from the heater, and you should be presented with just the flame tube as shown below.



12. Remove the flame tube.
Replace the burner gasket.
Clean out any carbon deposits inside the combustion chamber.



13. Put the flame tube back into the heater.

14. Loosen the highlighted screw on the **new burner**.

Insert the **new glow pin** all the way in until the end of the glow pin hits the burner housing.
Tighten this screw to secure the glow pin to the burner.

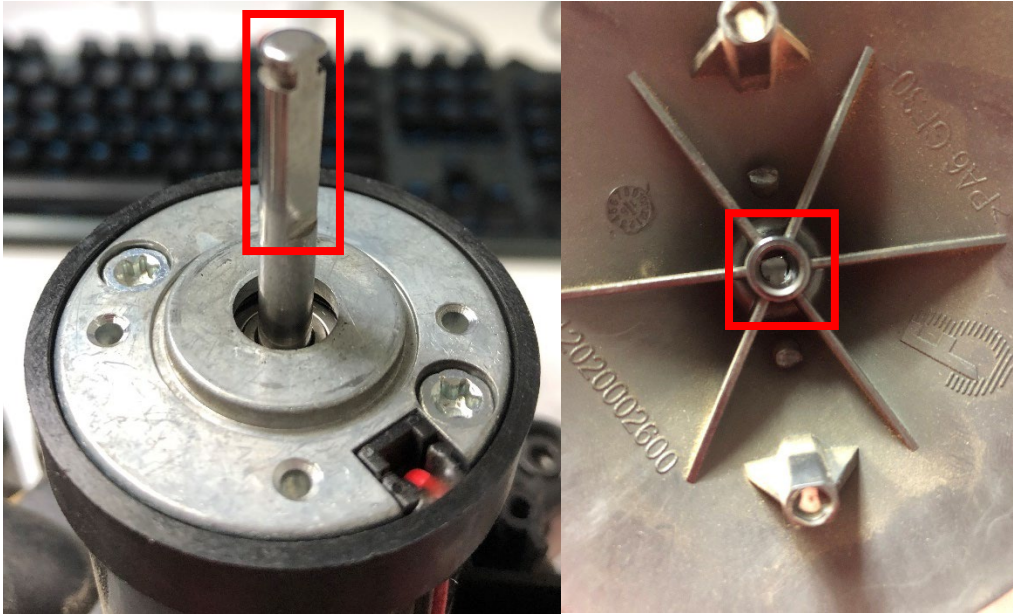


15. Put the **newly assembled burner** into the flame tube.
16. Tighten the 4 short screws with a T-15 screwdriver or equivalent.
17. Put on the **new blower gasket**.
18. Put the blower motor back onto the heater.
19. Tighten the 5 long screws with a 5/32 or T-25 screwdriver or equivalent.
20. Put the ECU back onto the blower motor and tighten the 3 Philip screws with a Philip screwdriver.
21. Refer to the picture you took earlier in step 5 and reconnect all connections to the ECU.

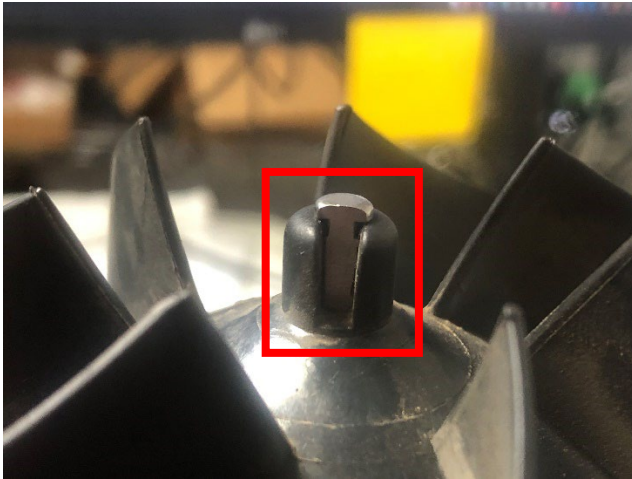
22. Assemble the impeller back onto the blower motor.

The impeller can only go in ONE way.

!!!DO NOT jam the impeller onto the blower motor driver.!!!



After the impeller has been correctly installed, it should look like the picture below.



23. Assemble the bottom cover onto the heater first, then the top cover.

24. Assemble the inlet and outlet covers onto the heater.

25. Maintenance is now complete.